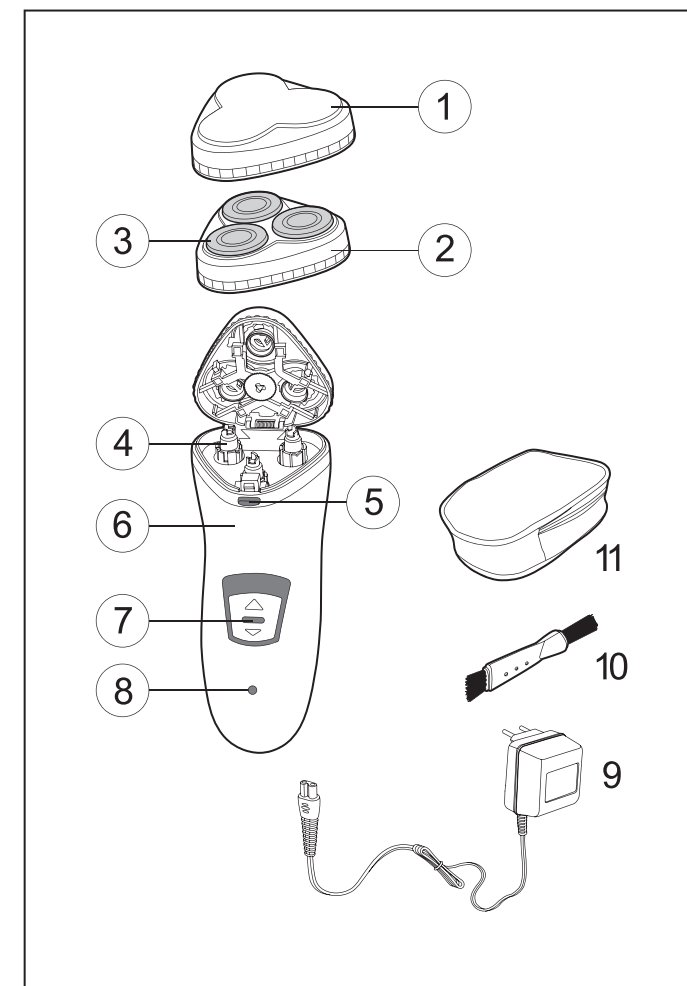
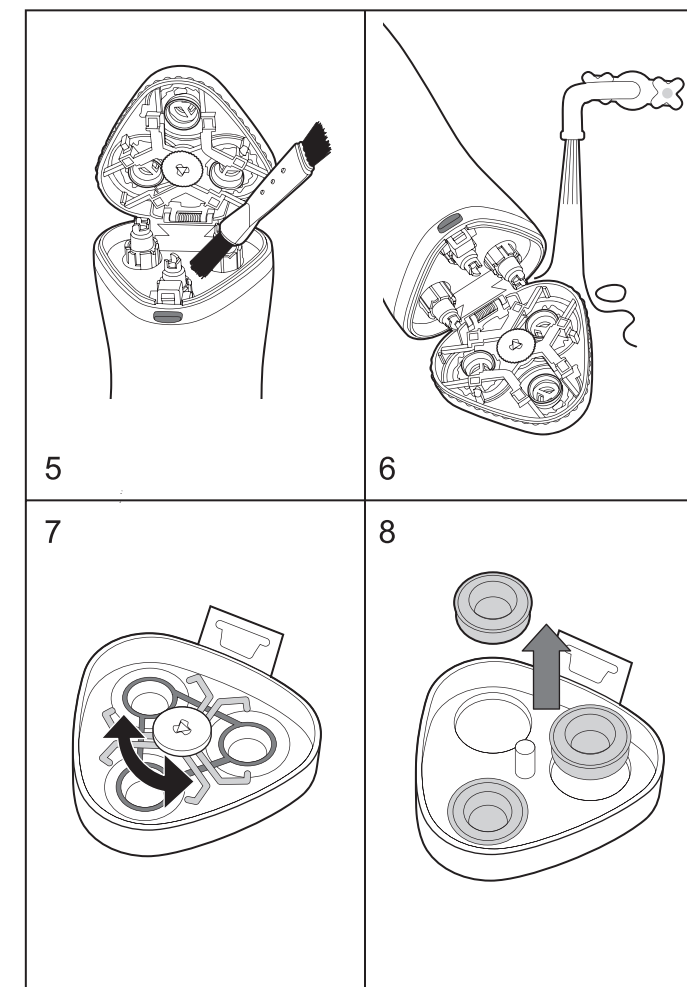


INSTRUCTION MANUAL



2

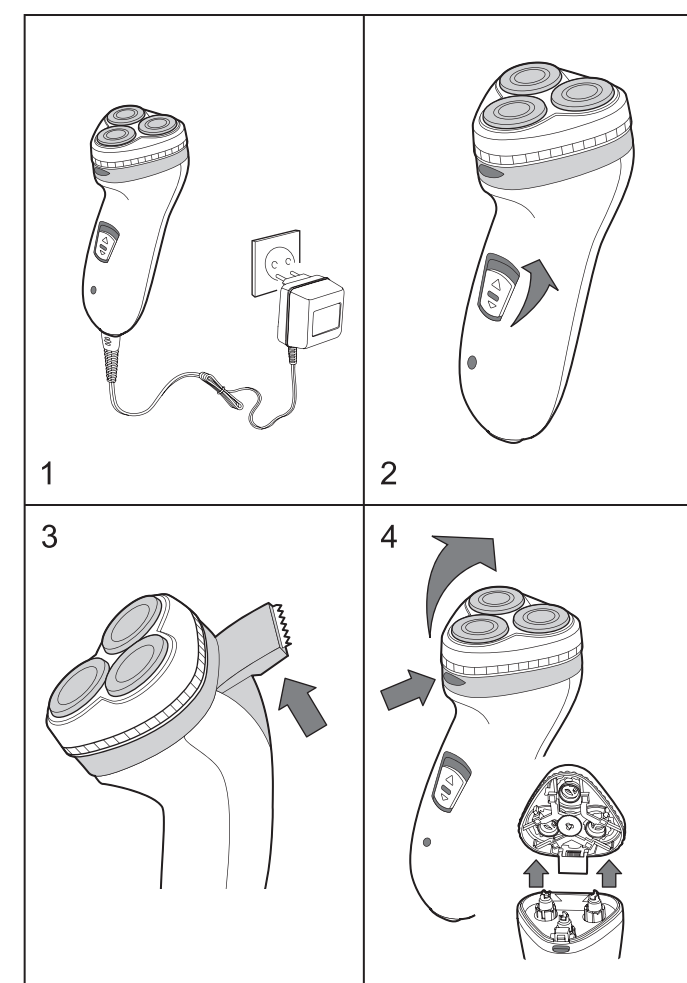


4

ENGLISH

- Turn off the electric shaver.
 - Press the locking button (5).
 - Pull up on and remove the shaving block (2) (pic.4).
 - Turn the ring counter-clockwise and remove the locking frame.
 - Remove and clean the shaving heads (separately rotating and non-moving blades). Do not confuse the rotating and non-moving blades. This is important because the rotating and non-moving blades of each head adjust to one-another, which guarantees the optimal operating characteristics of each pair of blades. If you accidentally confuse a blade block, it may take several weeks to restore optimal shaving characteristics.
 - Clean the rotating blade with the brush. Use the side of the brush with the short bristles.
 - Clean the non-moving blades with the brush.
 - Replace the shaving heads onto the shaving block, install the locking frame and turn the ring clockwise.
 - Turn the non-moving blades clockwise/counter-clockwise to lock their plastic frame.
 - Re-install the shaving block onto the shaver.
- Replacing the shaving heads (Pic. 7, 8)**
To achieve optimal results from your shaver, replace the shaving blocks every 2 years.
- Turn off the electric shaver.
 - Press the locking button (5) and remove the shaving block (2) (pic.4).
 - Turn the ring counter-clockwise and remove the locking frame.
 - Replace the shaving heads, install the locking frame and turn the ring clockwise.
 - Turn the non-moving blades clockwise/counter-clockwise to lock their plastic frame.
 - Re-install the shaving block onto the shaver.
- PROTECTING THE ENVIRONMENT**
This shaver contains rechargeable batteries. Before disposing of the expired electric shaver, remove the batteries and dispose of them according to the laws of your country for disposal of harmful waste. Do not throw the shaver away until you remove the built-in rechargeable batteries.
- Trimmer**
- Clean the trimmer after each use.
 - Turn off the electric shaver.
 - Clean the trimmer using the brush (10) included in the package.
 - Apply drops of sewing machine or hair clipper oil to the trimmer every six months.
- WARNINGS**
- The waterproof grade is IPX4, only washing but no dipping.
 - This product cannot be used by physically distempered, sensorily or mentally disordered, or inexperienced persons (including children), unless they are under supervision or instruction by people in charge of their security.

6



ENGLISH

RECHARGEABLE SHAVER

DESCRIPTION

1. Protective cap
2. Shaver block
3. Rotating blades
4. Blade drive
5. Shaver block locking button
6. Shaver housing
7. Power switch with locking button
8. Charging indicator
9. Charger
10. Cleaning brush
11. Travel bag

Attention!

- Do not charge the rechargeable batter for more than 10 hours or in temperatures lower than 0°C or higher than 40°C, as this can cause damage.
- If the shaver is not used for more than 20 days, then it should be charged for six hours.

Using the shaver

- The best shaving results are achieved if your skin is dry. Your skin may need 2-3 weeks to adapt to this shaving system.
- Remove the protective cap (1).
 - Turn on the switch (7).
 - Lightly touch the skin, moving around the shaving block using simultaneous up-down and rotating motions.
 - Turn off the shaver with the power switch (7), cover the shaving block with the protective cap (1) and store the shaver.

Using the trimmer (Pic. 2, 3)

- The trimmer is designed for evening whiskers and caring for mustaches.
- Move the trimmer switch to the upper position.
 - Turn on the shaver with the switch (7).
 - Position the shaver at the correct angle to the skin and move it gradually down, evening the whiskers.
 - Turn off the shaver and move the trimmer switch to the lower position.

Charging (Fig. 1)

- Before using the shaver for the first time or after a long period of disuse, it should be charged for 12 hours.
- Insert the charger plug (9) into the charging socket on the bottom side of the housing and connect the charger to the electrical network; the charging indicator (8) will light.

Cleaning the shaver

- Press the shaving block locking button (5) to open the shaving block and gain access for cleaning (Pic. 4).
- Using the brush (10), clean the shaving block inside and out, and also the blade drive (Pic. 5).
- The shaving block can be washed under a stream of warm water (Pic. 6). Dry the shaving block completely before closing. Do not allow water into the electric shaver's body. After completely dry, close the shaving block, reinstall the protective cap (1) and put away for storage.

It is recommended to clean the shaving heads once every two months (Pic. 7, 8)

5

ENGLISH

- Only use the shaver for the purposes intended, as instructed in these instructions.
- Take care of children to keep them away from this product.
- Do not charge the batteries in places where the temperature is lower than 0°C or higher than 40°C, or they are exposed to direct sunlight, near heat sources or places with high levels of humidity.
- Only use the charging device that came with the shaver.
- Keep the charger away from water and do not attempt to touch it with wet hands.
- Store the charger in a dry and safe place; protect it from damage.
- Do not use the charger in places where it can accidentally get bumped into the bathtub or sink.
- Do not press up on the non-moving shaving head screens in order to avoid damage.
- To avoid injury, do not use the shaver if the external shaving screen or internal cutting blades are damaged.
- If the shaver isn't working properly, take it to an authorized service center.

- Only use the shaver for the purposes intended, as instructed in these instructions.

This device is designed for domestic use only.

TECHNICAL CHARACTERISTICS

Charger
Power supply: AC 220 V - 50 Hz
Output voltage: DC 3.0 V

The manufacturer reserves the right to change the device characteristics without prior notice.

Service life - no less than 3 years.

GUARANTEE

Details regarding guarantee conditions can be obtained from the dealer from whom the appliance was purchased. The bill of sale or receipt must be produced when making any claim under the terms of this guarantee.

CE This product conforms to the EMC-Requirements as laid down by the Council Directive 2004/108/EC and to the Low Voltage Regulation (2006/95/EC)

7